

IT'S TIME TO GET SLIM!

The LIPOcel™ procedure utilizes High-Intensity Focused Ultrasound to reduce fat. This is a very safe, non-invasive and accurate method to deliver energy precisely to the subcutaneous fat layer without damaging the peripheral tissues.

LIPOcel™



LIPOcel Benefits:

01 More Effective

The high temperature of the target raises the temperature of subcutaneous fat cells to over 70 degrees by using powerful energy up to a maximum of 150 J/cm².

02 Maximum Patient Comfort

The powerful contact cooling maintains the skin's surface temperature at 5° C allowing for greater comfort and energy delivery.

03 No Downtime Procedure

The epidermis is always protected because the focal zone is formed on the subcutaneous fat layers below 1.3cm.

04 No Anesthesia Required

The whole procedure can be completed within 30 minutes.

05 Long Cartridge Life, Minimal Disposable Cost

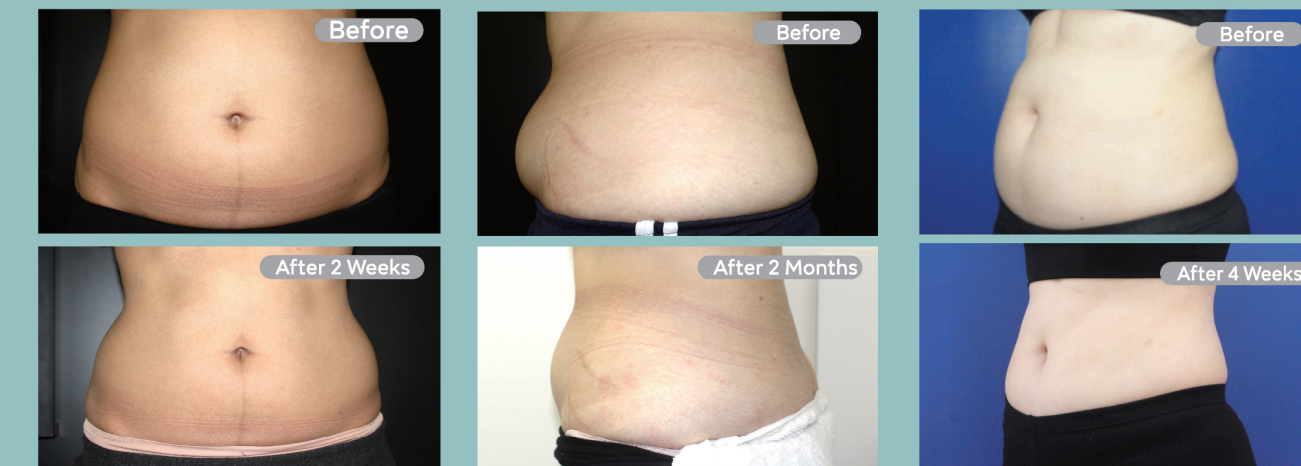
LIPOcel™

Body Specification

Frequency	2MHz
Energy	Max. 150J/cm ²
LCD	10.2 inch, touchscreen control panel display
Size	438mm (W) x 580mm (D) x 1080mm (H)
Weight	176 lbs / 80 Kg

Handpiece Specification

Switch	Finger switch
Treatment Zone	30mm x 30mm
Focus Depth	13mm
Cooling	Contact cooling cartridge (5°C)
Size	92mm (W) x 89mm (D) x 270mm (H)
Weight	3.3 lbs / 4.4 lbs (with cartridge)



Exclusive distributor of Jeisys Medical in the U.S.A.

Perigee Medical - 844-PERIGEE - perigee.com - LIPOC 121219 - © Perigee Medical, All rights reserved.



LIPOcel™

High-definition Body Contouring System



LIPOfcel™

The Most Comfortable Non-invasive Body Contouring System

Handpiece Contact Cooling Technology

“ The powerful contact cooling protects the epidermal and nerve areas greatly reducing discomfort and allowing for higher energy delivery. ”

Contact Cooling
Handpiece surface temperature
[5°C]

Contact Cooling Advantage

LIPOfcel proprietary contact cooling can reduce the handpiece surface temperature down to 5°C

Effectiveness of Contact Cooling

Protect Epidermis

Reduce Pain

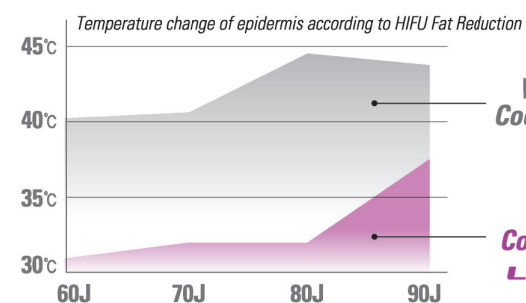
Higher Energy

More Effective Result

LIPOfcel is the best way to get rid of unwanted love handles with a fast, no-downtime treatment



Contact Cooling | Epidermal Protection

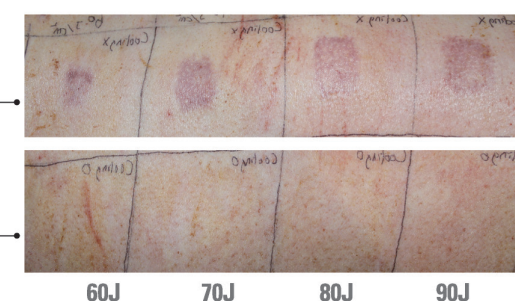


Without Cooling(20c)

Thermal Damage

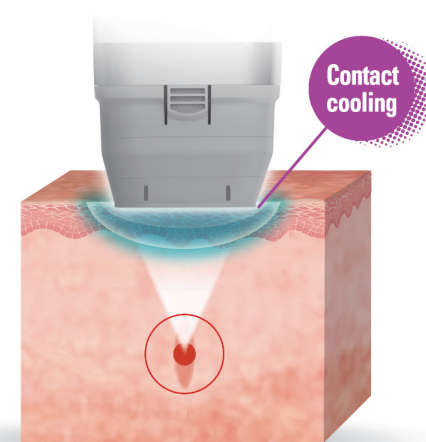
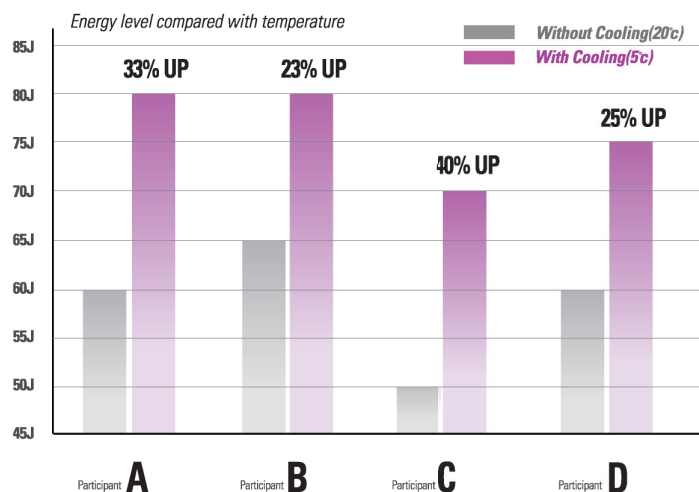
With Cooling(5c) LIPOfcel

No Thermal Damage



The graphic shows the difference between the same amount of energy delivered to the skin with continuous cooling at 5°C Vs. without cooling at 20°C during the procedure. Two shots delivered with continuous cooling at 5°C show no thermal damage in the epidermis even with energy increments from 60 to 90 J/cm². Thermal damage occurs when the same settings are applied without continuous cooling at 20°C.

Contact Cooling | Higher Energy



This chart compares four different patients treated using maximum energy output with and without contact cooling. As a result, increased amounts of energy between 15 to 20 J/cm² could be delivered to the patients treated with contact cooling. Contact cooling helps increasing patient comfort while enabling higher levels of energy delivery for better treatment efficacy and outcome.



LIPOfcel Cartridge | Variety of Treatments



5min.



15min.



10min.



8min.

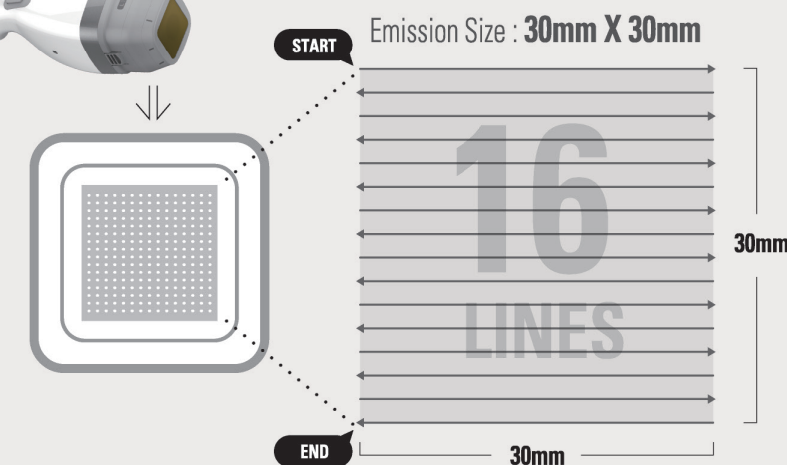


6min.



6min.

Fast Treatment | 16 Lines in ONE SHOT (HIFU)



A wider area of ultrasound emission and a quick movement of the transducer enable even faster and more efficient treatment.

